

ADA ECLIPSE™ INTEGRATION



“Aonix’ support for Eclipse™ affirms the benefits of a universal platform in delivering mission- and safety-critical tools.”

Mike Milinkovich
Eclipse Executive Director

SUPPORTED COMPILERS

- ObjectAda
- GNAT*

* Contact your Aonix account manager for information on this and other integrations.

DEVELOPERS NEED HELP

In the mission- and safety-critical market, developers come from a number of industry sectors, each carrying its own certification standards and specialized tools.

DEVELOPERS NOW HAVE A SOLUTION

By delivering the power of the standard Eclipse IDE with Ada programming language awareness, Aonix provides developers with built-in support for the project manager, editor, difference capability, compiler, debugger, and command history. Developers can focus on building applications, not on integrating tools since AonixADT™ also retains a large set of existing plug-ins for third-party tools, including support for source-code configuration management.

COMBINE USER-FRIENDLINESS AND PRODUCTIVITY

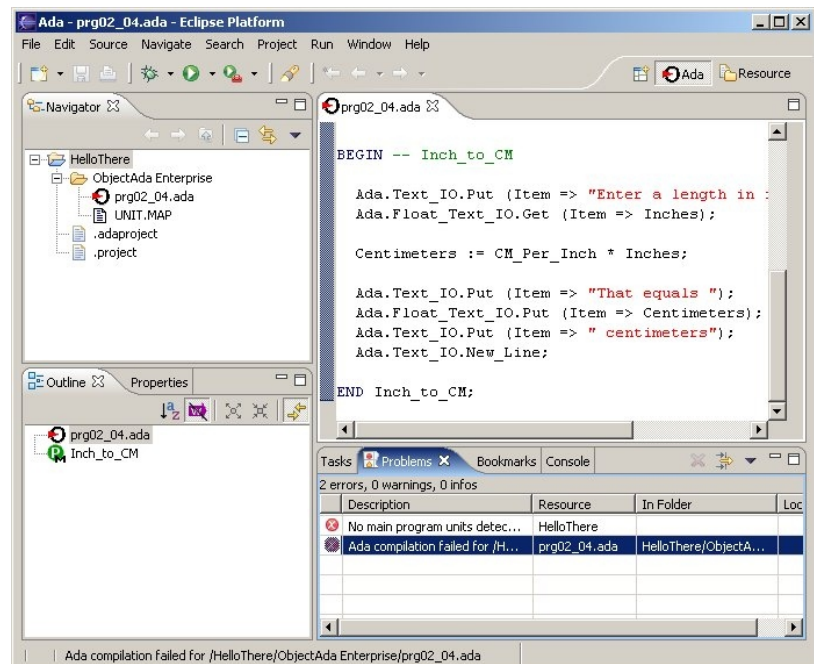
Eclipse offers a common platform for which many companies have developed plug-ins. Aonix has extended the wealth of interoperable technologies and tool flexibility available to Ada developers by ensuring that AonixADT (Ada Development Toolkit) is available on the universal Eclipse platform.

ABOUT ECLIPSE

Eclipse has established an open-source ecosystem of tools providers and consumers by creating technology and an open universal platform for tools integration. The open-source Eclipse community creates royalty-free technology as a platform for tools integration. Eclipse based tools give developers freedom of choice in a multi-language, multi-platform, multi-vendor, supported environment.

Eclipse delivers a plug-in based framework that makes it easier to create, integrate, and use software tools, saving time and money. By collaborating and sharing core integration technology, tool producers can concentrate on their areas of expertise and the creation of new development technology.

Full details of the Eclipse community and white papers documenting the design of the Eclipse Platform are available at www.eclipse.org.



ADT HIGHLIGHTS

Eclipse Project Manager

- ☞ Basic project navigation of files.

Outline View Window

- ☞ Indented list of Ada constructs for the currently open file with navigation to code.

Ada Project Navigator

- ☞ Ada-specific navigation of project files and folders with expansion of files to show internal constructs (variables, subprograms, types, etc.)

Ada 95 Colorizing Editor

- ☞ Customizable colorization of Ada source code
- ☞ Editor support for configurable code indentation while new code is written.
- ☞ Automatic parenthesis matching, block matching, etc.
- ☞ Semantic, project-wide navigation of Ada objects (variables, units, etc.) from editor including opening of the spec and body declaration and searching for references.
- ☞ Syntactic and Semantic Code Completion for standard Ada constructs as well as application objects such as packages, procedures, functions, types, exceptions, and tasks, which are visible in the current context.

Build Automation

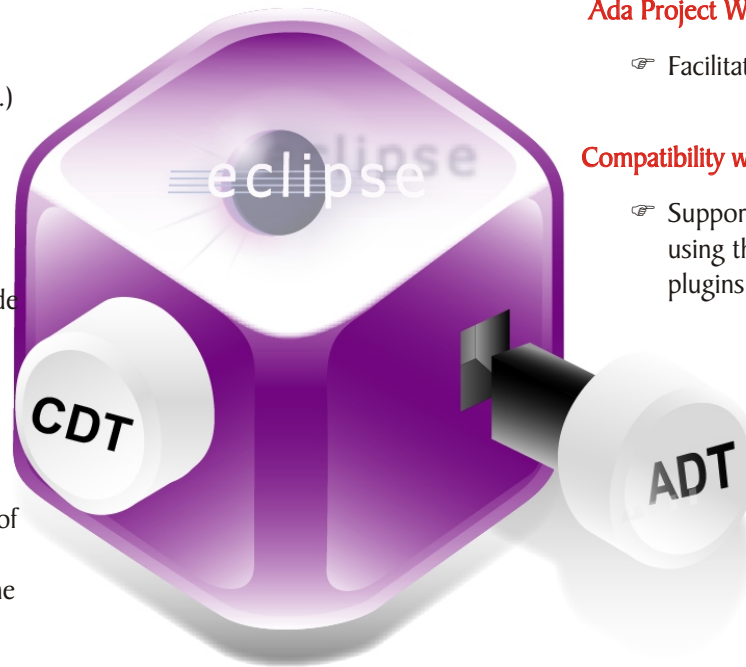
- ☞ Automatic, incremental builds of projects.

Configuration File

- ☞ Storage of all project build properties in ASCII text files which can be put under CM control with source files.

Navigation to Compilation Errors

- ☞ Build errors are displayed in Problems view with navigation to errors in source code.



Navigation to ARM

- ☞ Build errors allow easy navigation to relevant section of hypertext Ada 95 Reference Manual.

Pretty Printing

- ☞ Whole file source code reformatting to match project-customizable preferred format.

Team Support

- ☞ Support for Eclipse configuration management.

Multiple Partitions

- ☞ Support projects that contain software for more than one partition. This means the ability to build more than one executable in one project space. In other words, the developer can specify more than one main procedure in a project and ADT will build one or all of those procedures.

Ada Project Wizard

- ☞ Facilitates the setup of new projects.

Compatibility with Other Languages

- ☞ Support for multi-language projects using the CDT and other Eclipse plugins.

On-Line Help

- ☞ Language help is integrated with the Eclipse help system.

Configurable Toolchain

- ☞ Support for configuration of multiple Ada toolchains.

Graphical Debugger

- ☞ Support for configuring and debugging of executables and attaching to already running processes.

Customizable Execution Environments

- ☞ Support for execution of programs with different program, environment, and system configurations.

To obtain more information, please contact Aonix at www.aonix.com or your local Aonix office.



NORTH AMERICA
Phone: 800.97-AONIX
Fax: 858.824.0212
Email: info@aonix.com

FRANCE
Phone: +33 (0) 1 4148-1000
Fax: +33 (0) 1 4148-1020
Email: info@aonix.fr

UNITED KINGDOM
Phone: +44 (0) 1491 415000
Fax: +44 (0) 1491 571866
Email: info@aonix.co.uk

GERMANY
Phone: +49 (0) 7243 5318-0
Fax: +49 (0) 7243 5318-78
Email: info@aonix.de

SWEDEN
Phone: +46 (0) 8 6 01 94 91
Fax: +46 (0) 8 6 01 94 99
Email: info@aonix.se